

David Maher
Greater Manchester Police (GMP)

designforsecurity





Section 1

Design for Security



Design for Security – Overview



The background is a vibrant red color. It is decorated with various white geometric shapes and patterns. In the top-left corner, there are diagonal white lines. Scattered throughout are white shapes resembling folded paper corners, semi-circles, and abstract geometric forms. A prominent white shape on the right side resembles a stylized letter 'E' or a similar geometric figure. The overall aesthetic is modern and clean.

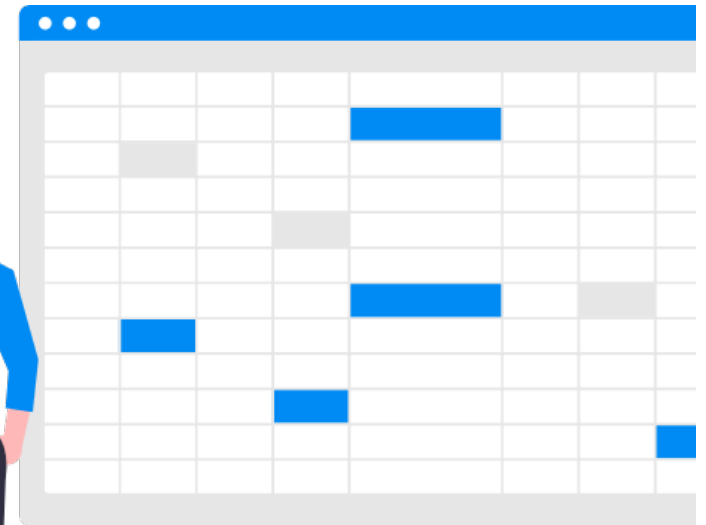
Section 2

Gap Analysis



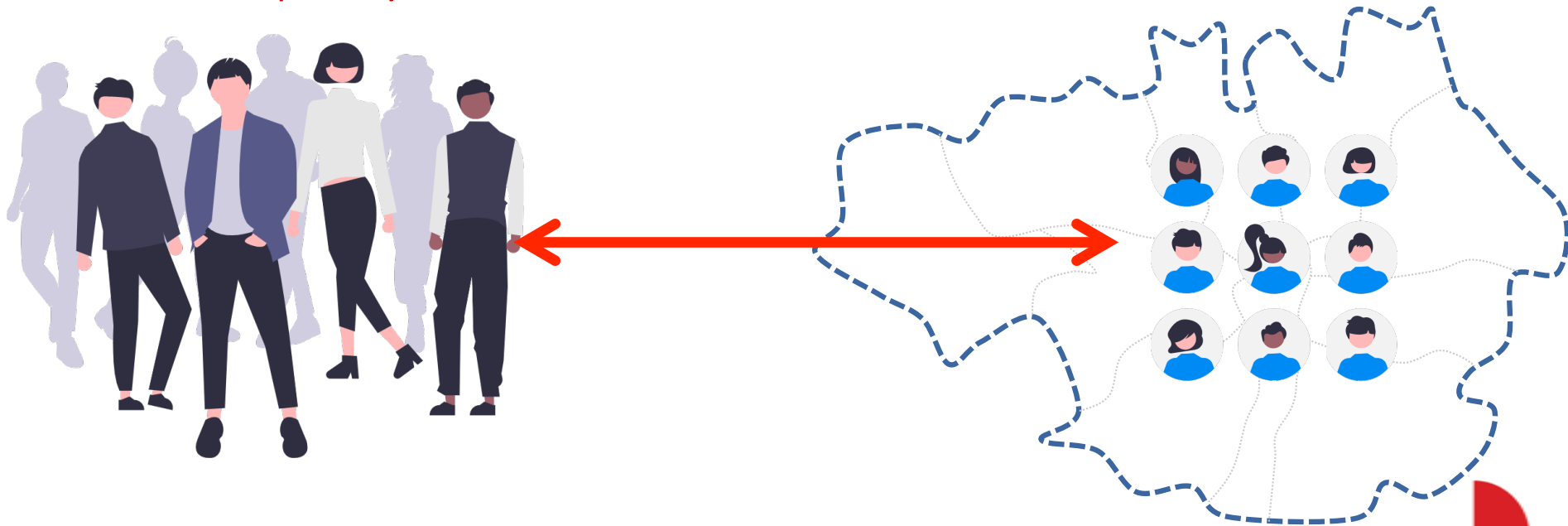
The Tool – Introduction & overview

- ▶ Weekly Team Meetings via Excel
- ▶ Ageing IT Portal system
- ▶ Repetition of project workload





Gap Analysis – Value of DfS within Greater Manchester Police



▶ Built Environment Specialists

▶ Lack of Evaluation & Impact

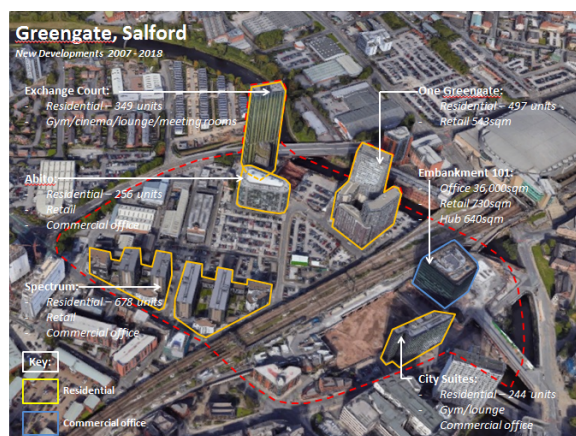
▶ Senior Officers

▶ Evidence Based Practice





Case Study – Greengate, Salford.



Greengate, Salford

- Building type & uses:
 - Residential / Private ownership / PRS...
 - Leisure
 - Commercial
- 8 CIS projects 2007 – 2018 = 2,024 res units
- 3 CIS project in 2019 = 3,007 res units
- Projected residential figure
 - TOTAL = 5031

- ▶ Case study (Proposed Salford Greengate) used to illustrate the information held within the DfS reporting systems and the future impact to policing.



The background is a vibrant red color. It is decorated with various white geometric shapes and patterns. In the top-left corner, there are diagonal white lines. Scattered throughout are white shapes resembling folded paper or cutouts, including triangles, circles, and curved segments. Some of these shapes have a slight 3D effect with shadows. The overall aesthetic is modern and clean.

Section 3

The Solution



The Solution – The Key Ideas

- ▶ GIS Mapping (Geographical Information System)
- ▶ Early Stage Intervention
- ▶ Integrated & Detailed Database
- ▶ GMP Collaboration
- ▶ Stronger Local Authority Relationships

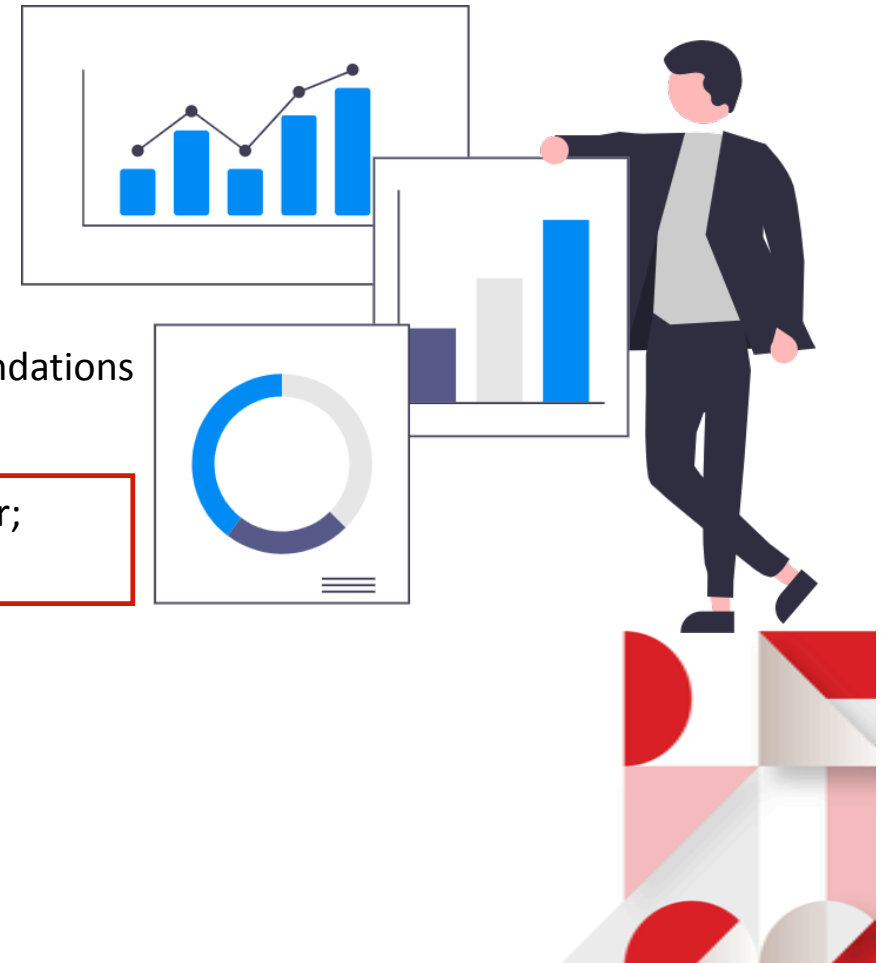




ProMIS – Toolkit Elements

- ▶ A System for Design for Security
- ▶ Recording / Managing DfS workload & projects
- ▶ Measure the Impact & Benefit of DfS recommendations

- ▶ Geographical picture across Greater Manchester;
 - A user friendly visual toolkit



The background is a vibrant red color. It is decorated with various white geometric shapes and patterns. In the top-left corner, there are diagonal white lines. Scattered throughout are white shapes resembling folded paper or cutouts, including semi-circles, triangles, and larger complex shapes. The overall aesthetic is clean and modern.

Section 3

The Toolkit

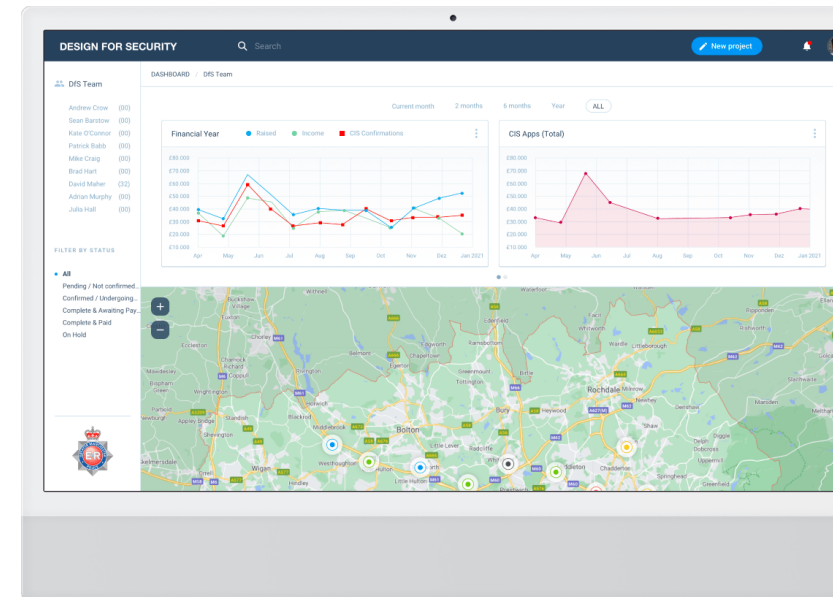


The Toolkit

ProMIS will correlate different project characteristics:

- ▶ Site Geolocation data (for GIS mapping)
- ▶ Local Risk features *i.e.* Bus stops/Alleyways/ATM...
- ▶ Project Timeline – *project inception to completion*
- ▶ Secured by Design achievement

ProMIS
PROJECT MONITORING
& IMPACT SUPPORT

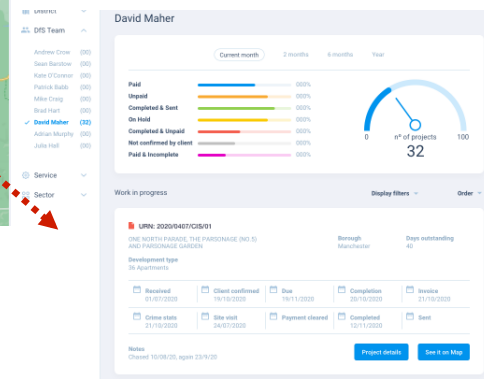
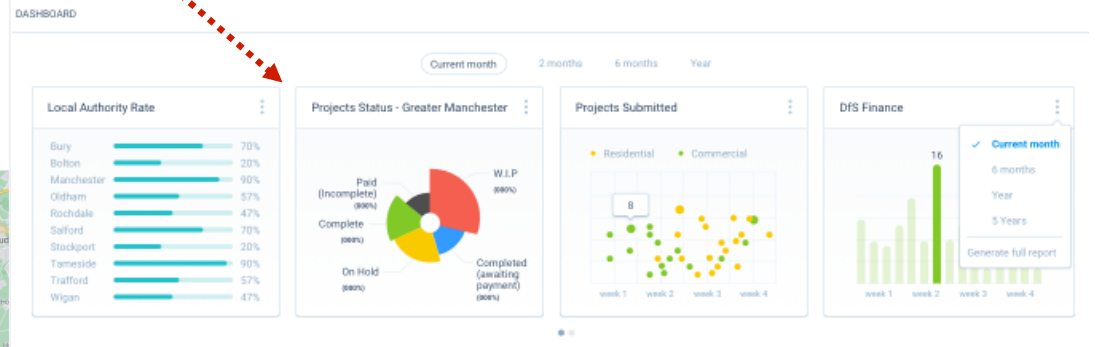
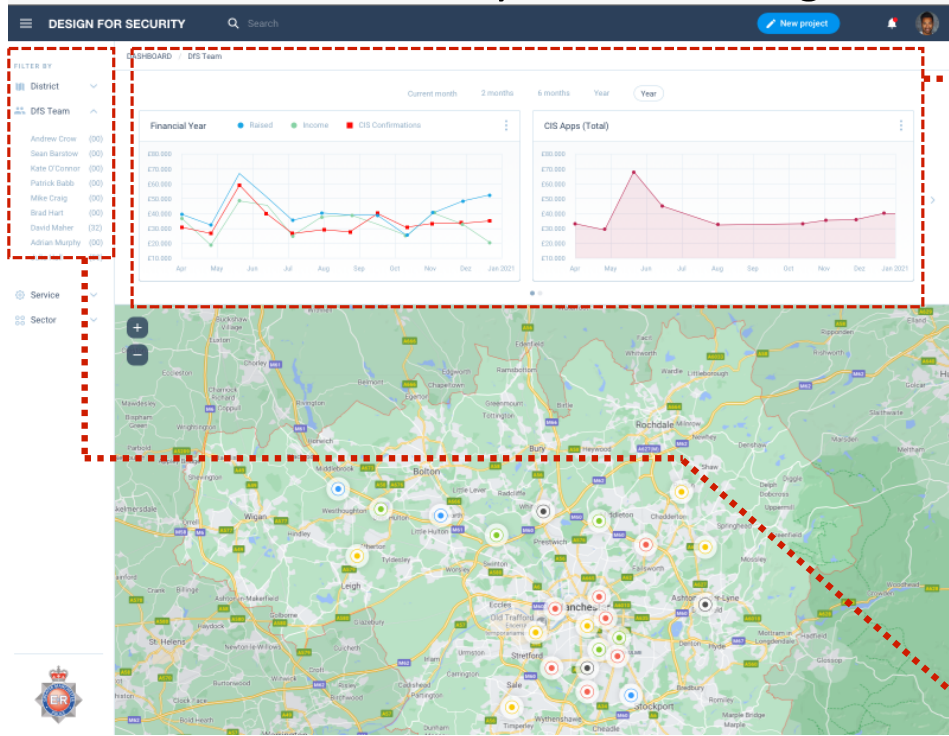


designforsecurity





DfS Weekly Team Meetings





The Toolkit

ProMIS will enable an overview of urban development across Greater Manchester

- ▶ Building type & use *i.e. Residential/Education/Office developments...*
- ▶ Dwelling numbers
- ▶ GIS Mapping – Long term tracking of projects
- ▶ Growth & Development of Areas & Communities
- ▶ Impact on Policing & Infrastructure needs





Project Detail

DESIGN FOR SECURITY Search New project

FILTER BY

- District
 - Wards & Police Districts
- DFS Team
- Service
 - Local Policing
 - Local Authority Plans
 - Counter Terrorism
 - Project Impact Review
- Sector

Wards & Police Districts

- Arden & Bewick (4)
- Ardwick (5)
- Aspley (7)
- Chorlton (1)
- Chorlton (2)
- Chorlton (3)
- Chorlton (4)
- Chorlton (5)
- Chorlton (6)
- Chorlton (7)
- Chorlton (8)
- Chorlton (9)
- Chorlton (10)
- Chorlton (11)
- Chorlton (12)
- Chorlton (13)
- Chorlton (14)
- Chorlton (15)
- Chorlton (16)
- Chorlton (17)
- Chorlton (18)
- Chorlton (19)
- Chorlton (20)
- Chorlton (21)
- Chorlton (22)
- Chorlton (23)
- Chorlton (24)
- Chorlton (25)
- Chorlton (26)
- Chorlton (27)
- Chorlton (28)
- Chorlton (29)
- Chorlton (30)
- Chorlton (31)
- Chorlton (32)
- Chorlton (33)
- Chorlton (34)
- Chorlton (35)
- Chorlton (36)
- Chorlton (37)
- Chorlton (38)
- Chorlton (39)
- Chorlton (40)
- Chorlton (41)
- Chorlton (42)
- Chorlton (43)
- Chorlton (44)
- Chorlton (45)
- Chorlton (46)
- Chorlton (47)
- Chorlton (48)
- Chorlton (49)
- Chorlton (50)

Ardwick Work in progress (9) Multi-Select

DFS Review DOWNLOAD PDF SHARE

Selected Projects Summary

CIS Projects: 2
Residential: 2
Mixed Use: 1
Total Residential: 450 (150 Houses / 300 Apartments) 200 x 1 bed 2 person apt / 100 x 2 bed 4 person apt, 90 x 2 bed 3 person houses / 60 x 3 bed 4 person houses
Estimated Residents: 1110
Total Retail: 4 Units (each unit 150sqm)
Estimated Employment: Retail - 16 / Residential - 12/14

URN-2018/1068/CIS/01
Warwick Street
Residential - 150 Houses

Date received: 03/05/20 Due date: 03/06/20
Days outstanding: 11 Date sent: 03/05/20
Notes: notes

URN-2019/0472/CIS/01
Charlton Place
Residential - 100 Apartments

Date received: 04/04/19 Due date: 05/05/19
Days outstanding: Complete Date sent: 01/05/19
Notes: Due for completion 1st Q 2021. SBD application ongoing

URN-2019/1068/CIS/01 Warwick Street
Residential - 150 Houses

Date received	Confirmation	Due date	Days outstanding	Invoice issued	Crime state	Site visit
03/05/20	04/05/20	03/06/20	11	05/05/20	04/05/20	06/05/20

Crime analysis

Dom. Burglary	Non. Dom. Burglary	Criminal Damage	Less serious wounding	Theft	Serious wounding	Theft from vehicle	Theft of vehicle	Cycle theft
7	2	1	3	2	1	0	0	1

Crime Summary

The overall crime in the last 12 months has been low, with less serious woundings, bicycle theft and theft being the highest recorded offences. Less serious woundings have mostly involved assaults and public order offences, which have taken place in the late evening and early hours of the morning when people are travelling home or into the city to attend licensed premises. Offences are also occurring in the afternoon, this has mostly involved public order offences involving college students.

Local risk features

The following features have been associated in close proximity to the proposed development site.

- Public House
- Telephone Box
- ATM / Cashpoint
- Green Space
- Off Licence
- Alleyways
- Cycle Stand
- Shelter
- Bus Stops
- Street Furniture
- Car Park
- Vacant Building / Structure
- Train Station
- Metro Link Stop
- Open Land
- Misc.

URN-2017/0345/CIS/02

DFS Review DOWNLOAD PDF SHARE

Selected Projects Summary

CIS Projects: 2
Residential: 2
Mixed Use: 1
Total Residential: 450 (150 Houses / 300 Apartments) 200 x 1 bed 2 person apt / 100 x 2 bed 4 person apt, 90 x 2 bed 3 person houses / 60 x 3 bed 4 person houses
Estimated Residents: 1110
Total Retail: 4 Units (each unit 150sqm)
Estimated Employment: Retail - 16 / Residential - 12/14



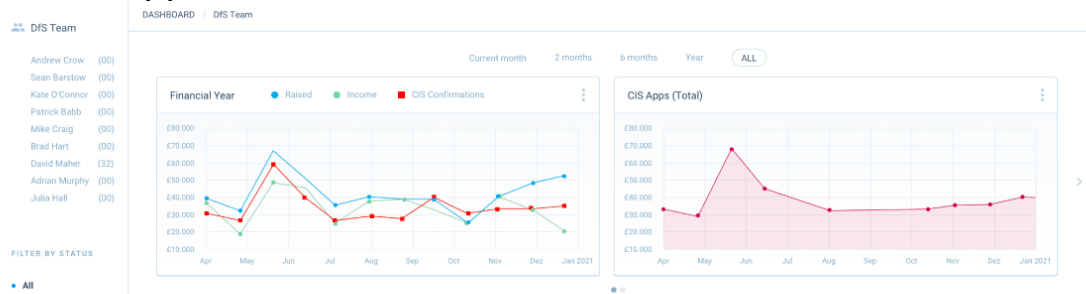
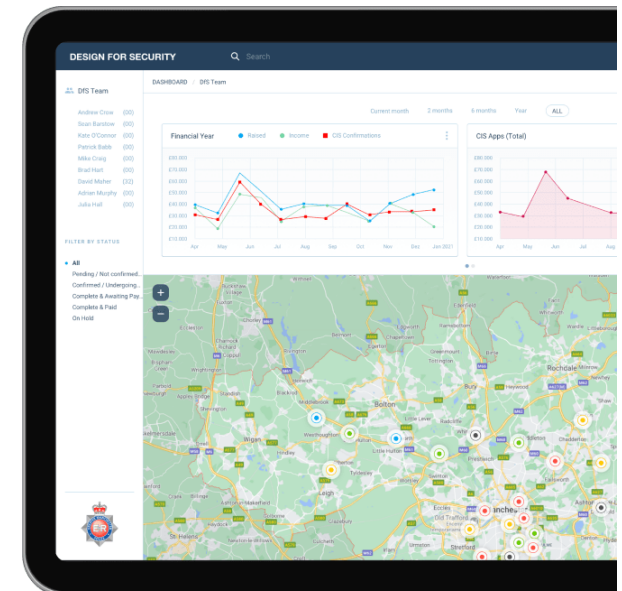


The Toolkit

ProMIS will supplement/update the existing 'Portal' IT system for tracking all Design for Security projects

- ▶ Assess the DfS business cycle basis *i.e. monthly; quarterly; annually*
- ▶ Provide analysis at the district level (or smaller, if feasible) and support the generation of visual data (graphs; tables; maps) that support communication of this assessment.

ProMIS
PROJECT MONITORING
& IMPACT SUPPORT



designforsecurity





Phasing the ProMIS Toolkit

ProMIS – Phase One

- ▶ Toolkit for the Design for Security team
- ▶ Migrate from Excel to ProMIS
- ▶ Visualise projects & Development hotspots

ProMIS – Phase Two

- ▶ Historic database incorporated
- ▶ Identify Development Hotspots
- ▶ A Visual communication aid between DfS & GMP Police teams
- ▶ Chart the progress of CP-UDP





Flexible System

ProMIS
PROJECT MONITORING
& IMPACT SUPPORT

The dashboard interface is titled "DESIGN FOR SECURITY" and includes a search bar and a "New project" button. It features a "DIS Team" list on the left with names and status icons. The main content area contains two line charts: "Financial Year" (with sub-charts for Rained, Income, and CIS Confirmations) and "CIS Apps (Total)". Below the charts is a map of Greater Manchester with various location markers. The interface is shown on a desktop monitor, a laptop, and a tablet, demonstrating its flexibility across devices.



designforsecurity





Conclusion

▶ ProMIS Toolkit – Structure / Business Development / Opportunities –

<ul style="list-style-type: none">• <i>Design for Security Toolkit</i>		<i>Working Tool / Interface</i>	<i>End User</i>
<ul style="list-style-type: none">• <i>Local Policing + GMP Internal Partner</i>• <i>10 GM Local Authority Planning Teams</i>		<i>Communication</i>	<i>Opportunity</i>
<ul style="list-style-type: none">• <i>Impact Reviews of the DfS Services</i>		<i>Relationship</i>	<i>Opportunity</i>
		<i>Service Development</i>	<i>Evolve</i>





ProMIS

PROJECT MONITORING
& IMPACT SUPPORT

- ▶ Thank you for listening
- ▶ Any Questions?

designforsecurity

